



Elara™ FR-345-EST Quick Install Guide

Camera Body and Bracket



**Two-Pin Power
Terminal Block**



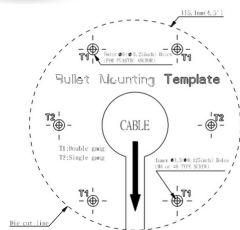
**T10 Self-Tapping
Screw x 6**



Plastic Anchor x 6



Torx Wrench



Mounting Template

Items Included in Kit (images not to scale)

1 Check Contents

Make sure all of the items above are included in the camera kit.

2 Select a Location

Select a suitable location to mount the camera.

The focus for both of the camera's sensors is fixed at one meter (39.4"). If it will be used in EST screening mode, make sure to install the camera so that the faces of persons being screened for EST are $1\text{m} \pm 0.2\text{m}$ ($39.4" \pm 7.9"$) away from the front of the camera.

Verify that the operating temperature is 15°C to 45°C (60°F to 110°F), 0-95% relative humidity. The camera provides optimal performance in a stable environment near 22°C (72°F).

For further advice on positioning and orienting the camera, see the camera's installation and user guide.

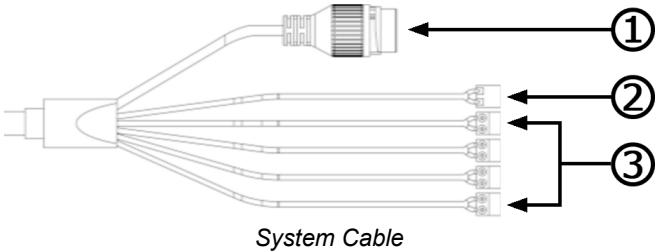
3 Configure the Camera

FLIR recommends configuring the camera on a bench or in a lab before mounting and aiming it. However, it is also possible to configure the camera after mounting it, which could be more appropriate for certain installations.

3.1 Install the FLIR DNA tool

To discover the camera on the network, FLIR recommends using the FLIR Discovery Network Assistant (DNA) tool. Version 2.3.0.19 or higher supports Elara FR-345-EST, does not require a license to use, and is a free download from

3.2 Connect the Camera



- a. Attach an Ethernet cable to the RJ45 connector for a 10/100 Mbps Ethernet and PoE+ (Power over Ethernet) IEEE 802.3at connection.
Make sure the camera and the PC you are using to configure the camera are on the same LAN segment.
- b. Connect the alarm connectors, if needed.
- c. If using an external 12 VDC or 24 VAC power supply, connect its wires to the two-pin power terminal block. Then, insert the terminal block into the power connector.

Connector		
1	Black	RJ-45
2	Black	12-30 VDC (±10%) / 24 VAC (21-28 VAC) -
	Red	12-30 VDC (±10%) / 24 VAC (21-28 VAC) +
3	Yellow	NOT USED
	Orange	NOT USED
	Purple	NOT USED
	Green	NOT USED
	Red	ALARM IN signal
	Black	ALARM IN GND
	Brown	ALARM OUT signal
	Blue	ALARM OUT COM

3.3 Configure for Networking

You can configure the camera for networking using the DNA tool, the camera's web page, or a supported VMS.

	DNA tool	Camera's web page
Discover camera IP address	•	
Configure IP address, mask, and gateway	•	•
Configure DNS settings, MTU, and Ethernet speed		•
Change user credentials	•	•
Configure more than one camera at the same time	•	

For information about using the supported VMS to configure the camera, see the VMS documentation.

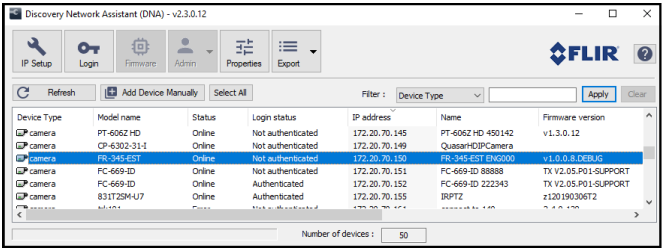
By default, DHCP is enabled on the camera and a DHCP server on the network assigns the camera an IP address. For example, if the camera is managed by FLIR's Horizon or Meridian VMS and the VMS is configured as a DHCP server, the VMS automatically assigns the camera an IP address.

If the camera is managed by FLIR's Latitude VMS or is on a network with static IP addressing, you can manually specify the camera's IP address using the DNA tool or the camera's web page. The camera's default IP address is 192.168.0.250.

To manually specify the camera's IP address using the DNA tool:

- a. Run the DNA tool (DNA.exe) by double-clicking .

The Discover List appears, showing compatible devices on the LAN segment and their current IP addresses.

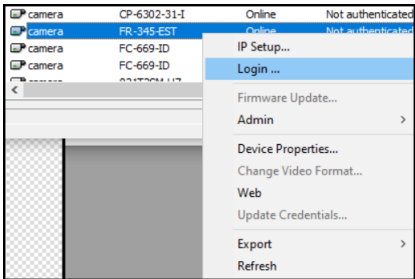


In the DNA Discover List, verify that the camera's status is *Online*.


If this is the first time you are configuring the camera or if it is the first time after resetting the camera to its factory defaults, DNA automatically authenticates the camera with the default password for the camera's admin user (*admin*).

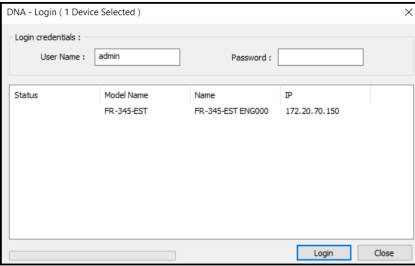
If the admin user password has been changed, you need to authenticate the camera.

In the DNA Discover List, right-click the camera and select **Login**.



In the **DNA - Login** window, type the password for the admin user. If you do not know the admin user password, contact the person who configured the camera's users and passwords.


Click **Login**, wait for  Ok status to appear, and then click **Close**.

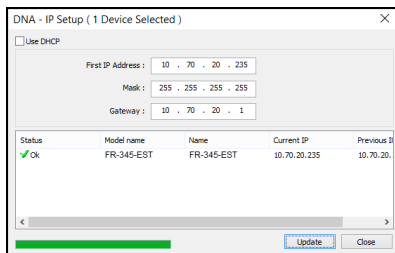


In the DNA Discover List, verify that the camera's status is *Authenticated*.

- b. Change the camera's IP address.
Right-click the camera and select **IP Setup**.

In the **DNA - IP Setup** window, clear *Use DHCP* and specify the camera's *IP address*. You can also specify the *Mask* (default: 255.255.255.0) and *Gateway*.

Then, click **Update**, wait for  **Ok** status to appear, and then click **Close**.



4 Install the Camera

The camera can be mounted directly on a wall or a ceiling, or it can be mounted using the CB-WLBX-G4 Wall & Surface Mount Kit, which includes a junction box. For the full list of mounting and other accessories available for the camera, see the *FLIR Security Cameras - Accessory Guide*.

4.1 Fit Mounting Hardware

If using the CB-WLBX-G4 Wall & Surface Mount Kit with junction box, install it according to the installation guide for that accessory.

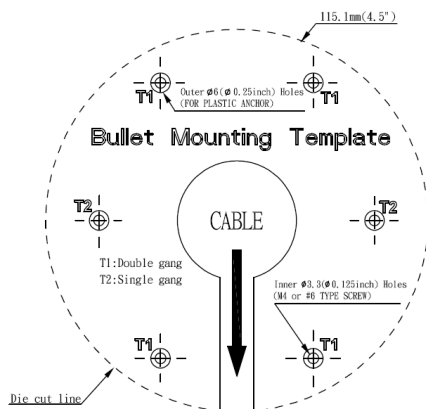
If using other mounting hardware, install the mounting hardware for the camera according to instructions.

4.2 Prepare the Surface for Mounting

Be sure to have the required accessories and tools available.

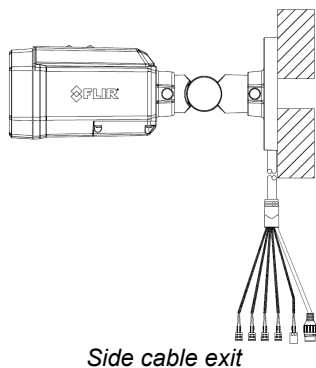
Refer to the camera's installation and user guide as necessary.

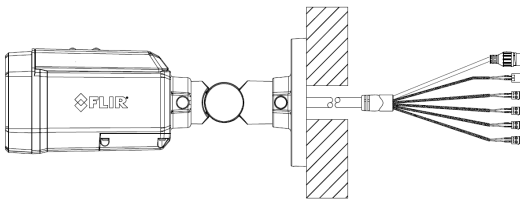
- Attach the mounting template sticker onto the wall or ceiling where you are mounting the camera.
- Drill six anchor holes according to the template.
- Hammer the six plastic anchors into the drilled holes.



- If the system cable is going to exit from the rear, drill a hole in the center of the mounting template for the cable.

The system cable can exit either from the side of the camera's mounting bracket or through the hole in the back of the mounting bracket.





Rear cable exit

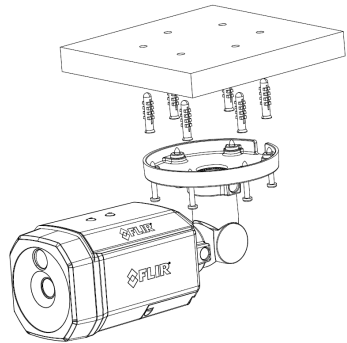
4.3 Route Cables and Connect the Camera

- If you are using a mounting accessory, install the power and network cabling in the mounting hardware so that it is accessible when the camera is mounted.
- Attach an Ethernet cable from the network switch to the RJ45 connector.
- Connect the alarm connectors, if needed.
- If using an external 12 VDC or 24 VAC power supply, connect its wires to the two-pin power terminal block. Then, insert the terminal block into the power connector.

4.4 Mount and Aim the Camera

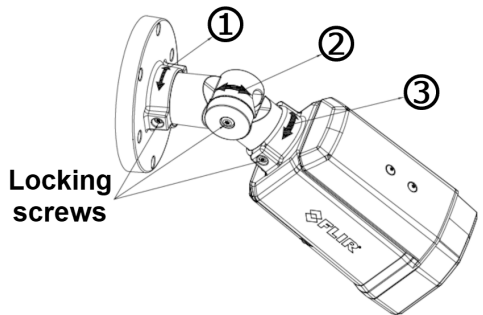
- Place the camera over the surface and securely fasten the T10 self-tapping screws clockwise into the plastic anchors.

Make sure that the camera's general orientation covers the required field of view.



- Aim the camera.

Support the camera's weight with your hand. Then, loosen the three locking screws and adjust the camera's pan, tilt, and rotation.



Important

While aiming the camera, make sure to support the camera's weight with your hand.



Tip

FLIR recommends aiming the camera while monitoring the camera's live video on the camera web page or in a video stream.

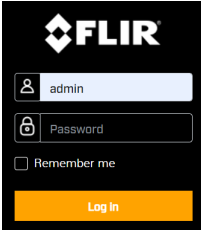
- c. Make sure that the toothed surfaces are properly aligned and meet evenly. Then, use the T10 torx wrench to securely tighten each locking screw.



5 Boresight the Camera

The admin user or any user assigned the admin or expert role can boresight the camera using the camera's web page, which supports Google Chrome (recommended), Firefox, Microsoft Edge, and Internet Explorer 11 (32-bit), on PCs running 64-bit Windows 7, 8, 8.1, or 10.

- a. In the DNA Discover List, double-click the camera.
- b. On the login screen, type a user name and password. Both are case-sensitive.

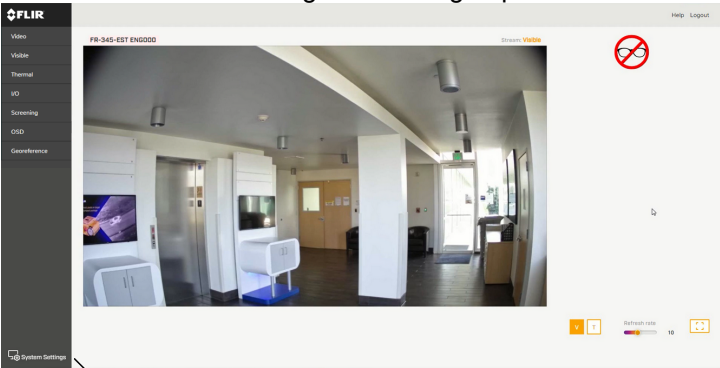


When logging in to the camera's web page for the first time or for the first time after resetting the camera to its factory defaults, type *admin* for the user name and for the password.

Then, specify a new password for the admin user. Use a strong password consisting of at least eight characters and at least one uppercase letter, one lowercase letter, and one number. Passwords can include the following special characters: |@#~!\$&<>+ _-.,*? = .

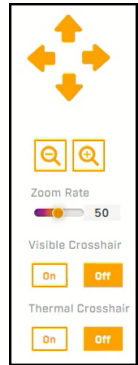
Log back in using the new password.

The camera's View Settings Home Page opens.



System Settings

- c. Click **System Settings > Boresight**. The Boresight page opens.
- d. Using the digital pan, tilt, zoom, and crosshair controls, align the visible video image with the thermal video image.
- e. Click **Save**.





Important

After powering up the camera, wait 30 minutes before commencing screening. The camera's thermal sensor needs to stabilize. In System Settings, click **Firmware & Info**, and make sure the Temperature is stable.

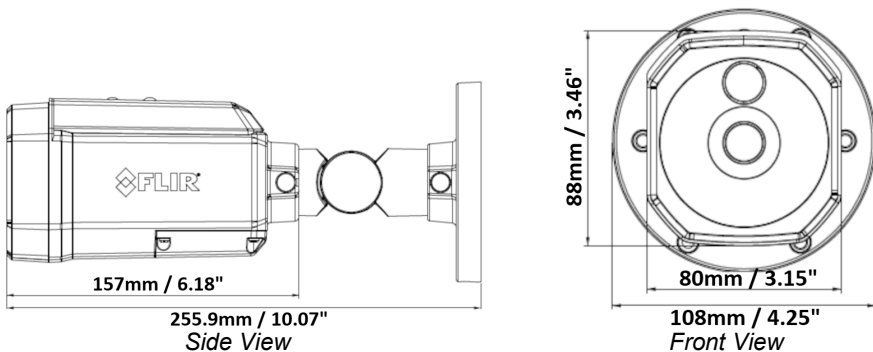
For information about using the camera's web page to perform additional configuration steps, see the camera's installation and user guide.

6 Attach the Camera to a Supported VMS

After you have mounted the camera and discovered or defined its IP address, you can use VMS Discovery/Attach procedures to attach the camera to a supported VMS.

7 Camera Dimensions

The Elara FR-345-EST camera's dimensions are:



8 Register the Product

Register your Product with FLIR at <https://customer.flir.com>.

For warranty information, see <https://www.flir.com/support-center/warranty/security/flir-security-product-warranties/>.

9 Contact Information

FLIR Systems, Inc.
6769 Hollister Avenue
Goleta, CA 93117
USA

Support: <https://www.flir.com/support/>

Corporate Headquarters
27700 SW Parkway Ave.
Wilsonville, OR 97070
USA



427-0108-00-12 Rev 110